



# MESSENGER

## Mission Statement L.O.V.E. G.O.D.

Lead Others to spiritual  
Victory; to Encourage,  
to Give of Ourselves  
and Demonstrate  
the love of Jesus

*Ask, and you shall receive.* (Matthew 7:7, Mark 11:24, Luke 11:9, John 16:24)

*You have not because you ask not.* (James 4:2)

What if it was as simple as that?

In their book, *Bucket of Surprises*, authors John and Mark Stibbe tell the story of a little boy who wanted \$100.00 badly and prayed to God for a whole week, but nothing happened. So, he decided to write God a letter requesting the \$100.00. When the Post Office got the letter addressed to God, they forwarded it on to the White House. The President was very impressed, touched and amused so he instructed his aid to send the boy \$5.00. He thought \$5.00 would be a lot to the little boy. The boy was, indeed, delighted by the money. He sat down and wrote a thank you note immediately, which read: "Dear God, Thank you very much for sending the money. However, I noticed that for some reason you had to send it through Washington and, as usual, they kept most of it."

In real life, when we ask God for something, God doesn't go through Washington! More often than not, when we don't get all that we want from God, it's because we haven't asked for it. We have a loving Father who desires to give us more than enough to meet our needs. Unlike a human father, God knows everything we need before we ask. But God is like a human father in that God want us to approach directly and ask for what we want or need. It really is as simple as "you have not because you ask not" because God deeply desires to bless us!

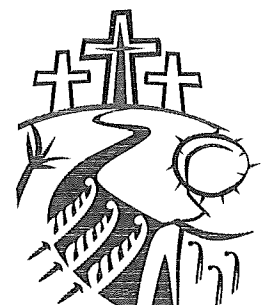
So, if we want God to shower our congregation with blessings – if we want to grow in our personal and corporate faith – if we want to be a light to our neighbors and draw them to Christ – we need to go to God directly and state that this is what we want. That is why we are engaging in a type of prayer called "Breakthrough Prayer." A breakthrough prayer is a prayer that asks God to open us up to new possibilities. A breakthrough prayer ignites us and produces an unprecedented and miraculous impact. It opens the floodgates of the power of the Holy Spirit on a worshipping community because the entire community is praying together and inviting God to lead it.

Our breakthrough prayer was developed by a team of prayer warriors in the congregation who attended a workshop on breakthrough prayer. We are calling it "a prayer for the flame of revival" because, through this prayer, we are asking God to revive each of our own hearts and to revive our church and our community for the gospel. The prayer is: "Lord, lead us by your Holy Spirit as we become agents of revival in our communities. May we move more deeply into relationship with Jesus and draw your people to your light. We give you all praise and glory. Amen."

This prayer will appear in our bulletin, our newsletter, and on our website. It will be given to you to take home. It will be prayed at meetings. It will be our "ask" of God to lead us into the future that God has prepared for us. It will be the beginning of a new season of prayer at Neal Avenue United Methodist Church, in which we are intentionally partnering with God in the work God is doing.

As part of our new prayer initiative, I also invite you to prayer walk in the church, in the neighborhood around the church, and in your own community. If you can't walk it, you can visualize the areas you are praying over – but please still pray!

Breakthrough prayer is a powerful prayer because it relies on the promise that Jesus made that if we ask, we will receive. This promise impressed the disciples of Jesus so much that all four gospels record these words! May we enter into this season of prayer with hopeful expectation that God will do what God has promised.



Shalom,  
Pastor Em

## Neal Avenue Supports "Operation Feed 2019" (Food Pantry Network)

Soon you will be seeing OPERATION FEED signs in the church with details of the 2019 Food Pantry suggested schedule of giving. In case you want to plan your personal giving schedule, we will use the following 2019 Sundays as suggested intake Sundays:

February 24 ~ March 3 ~ March 10 ~ March 17 ~ March 24 ~ March 31

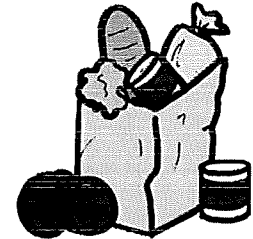
In this Messenger, you will find an associated article telling items the Food Pantry would enjoy receiving, but are not considered "essentials". In my opinion, many of these items are considered "almost essential" to my family.

Any non-perishable items you want to donate are gratefully received.

Reminder: If you offer cash/check, Food Pantry Network can purchase almost 9 times that dollar amount through their "food bank" connection!

Checks should be made out to "Neal Ave. United Methodist Church", and in the Memo line write, "Operation Feed".

Mary Frances Rauch,  
your Operation Feed coordinator  
(740-522-4710)



**THINGS YOUR FOOD PANTRY WOULD APPRECIATE**, but don't ask for since they are not considered essentials.

1. Spices. Think about it. We all enjoy spices: Seasoned salt, pepper, chili powder, cumin, cinnamon, nutmeg, sage, vanilla, oregano, basil etc.
2. Feminine/Male/Baby Products. Can you imagine the expense of Depends, Diapers, Kotex pads, Tampons, panty liners, baby oil, powder, disposable crib/bed pads, liners, etc.
3. Chocolate. Maybe people don't need it, but think how nice it would be to be given a chocolate bar or brownie mix along with your essentials.
4. Toiletries. You know how expensive these items can be. Consider donating toilet paper, tooth paste, soap, deodorant, shampoo, etc. Food stamps often don't cover these.
5. Canned meats and jerky. This isn't true of all food banks, but some struggle to give users enough protein.
6. Crackers and boxed tortillas. - Everybody enjoys them.
7. Soup packets. Sometimes you look at rice, beans, potatoes, and cans of vegetables and think, "What do I make with this?" Remember, a hearty soup is a complete meal.
8. Socks. Many people tell us, "Socks mean the world to them". You need several pairs to keep you clean, dry, warm, and comfortable..
9. Canned fruit other than pineapple. Food banks get a lot of pineapple donated. Their clients love it when other kinds of fruit are available. Peaches and applesauce are big favorites!
10. Plastic rain scarves and/or plastic "rain slickers".
11. 1-gallon Ziploc-type bags (useful in hundreds of ways).

## Worship Schedule

### March 3

**Liturgist:** Laura Atherton

**Communion Stewards:** Randy & Susan Spiker and Becky Lawrence & Liz Hayden

**Children's Sermon:** Dave Rauch

**Holy Communion:** at the rail

### March 6: Ash Wednesday Service

6:45 p.m. Bell Choir Prelude

7 p.m. Worship in the Fellowship Hall

### March 10

**Liturgist:** Doug Stout

**Children's Sermon:** Sue Spiker

### March 17

**Liturgist:** Randy Spiker

**Children's Sermon:** Laura Atherton

### March 24

**Liturgist:** Carol Powell

**Children's Sermon:** Randy Spiker

Ushers: Ernie Yost, Richard Gibson, Bill Miller, Tim Howell, Harold Hayden, Bob Howell  
Balcony: Doug Stout

## Attendance & Income

### Attendance

<u>Date</u>	<u>Worship</u>	<u>SS</u>	<u>Jr Church</u>
1/27	91	54	2
2/03	97	54	2
2/10	147	49	2
2/17	89	49	2
2/24	90	44	2

### Operating

<u>Date</u>	<u>Offering</u>	<u>YTD</u>
1/27	\$8,672.20	\$21,558.20
2/03	6,116.20	27,674.40
2/10	3,730.00	31,404.40
2/17	4,206.00	35,610.40
2/24	2,260.00	37,870.40

~~~~~  
**Other Income ~ (1/27-2/24)**

Food Pantry ~ \$43

Community Dinner ~ \$60

Boiler Fund ~ \$500

Human Relations Day ~ \$50

### *PRAYER FOR THE FLAME*

#### *OF REVIVAL*

*Lord, lead us by your Holy Spirit  
as we become agents of revival in  
our communities.*

*May we move more deeply  
into relationship with Jesus  
and draw your people to your light.  
We give you all praise and glory.  
Amen.*

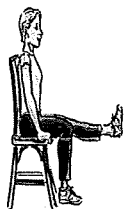


## March 10

Turn your clocks ahead one  
hour before bed Sat. March  
9th.

*Lord,  
Hear Our  
Prayer*

## Fellowship Opportunities



### **Chair Aerobics**

Tuesday, March 5 and 19 at 5 p.m.  
@ the church

### **Young At Heart**

Meets at Noon on March 11  
Park Place Bistro  
Hosts: Melinda Matthews & Debbi Hodges

---

## Neal Avenue Christian Women

### **What We Are All About**

*(excerpts from Mary Frances Rauch)*

**NAOW** is a fellowship of women in our church who come together to support each other and participate in mission works that support local and global ministries and ministries of our church.

You may not realize how important YOU are. Yes, each one of you is vitally important to the mission work of the church.

Some of the projects we have supported include:

Bereavement dinners, Thanksgiving dinners for shut-ins, God's closet, St. Vincent-DePaul Men's Shelter, Shoeboxes for Salvation Army, Food Pantry Network, Red Bird Mission, Heartbeats, Heifer International, VBS Turban Project, World Thank Offering, UMCOR, Least Coin Offering, Secret Prayer Sisters

If you are not familiar with some of these projects, we invite you to join us to learn more about them at our first meeting this year.

**Thursday, March 21 @ 6:00 p.m. in the Lounge**

If you are interested, but it is difficult for you to attend the first meeting alone, please mention your interest to one of the leaders - Betty, Phyllis, or Judy.



## *Happy Anniversary*

David & Dixie Coventry    March 6  
Tom & Nancy Gall        March 16  
Eugene & Dorothy Layton    March 23  
Ernie & Ethel Yost        March 24



## *With Gratitude*

*Many thanks to my church family for the beautiful cards, calls and prayers for me during my recent surgery. Also for your continued prayers for our grandson Griffin.*

*Blessings to all,*

*Carol Hayden*

*Thank you to everyone for your prayers and to Pastor Em for the visit during my recent hospital stay.*

*Charlene Broseus*

---

## **LENTEN STUDY**

*The Case for Easter*

*By Lee Stoebel*

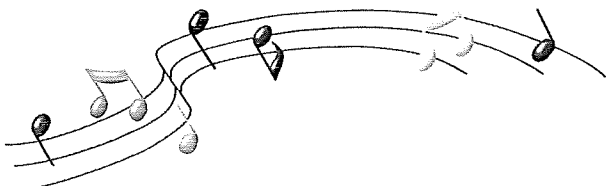
*March 7 - April 11*

*Thursdays @ 10 a.m. and 6:30 p.m.*



*A Message from Rodney:*

When you think about it, decisions are a constant factor in our lives. They can be simple everyday decisions or very difficult ones that can change the landscape of your life. Decisions can be made quickly or be extremely thought out. They can be planned or unanticipated. Whatever the situation, decisions can change so many aspects in our lives, for the better or for the worse. Sometimes decisions can be made to venture, not knowing whether you are heading for a positive or negative outcome. I was faced with a very difficult, unanticipated decision, one that will change the landscape of my life. I decided to accept a position at a church that is located five minutes from where I live. This church is starting a third contemporary service involving a praise band that will begin this Spring. I will be responsible for the music of this service. I am also making this move for the best interest of my family. My decision to leave Neal UMC has been very difficult and emotional for me, just ask any choir member. I regret the poor timing of this move. I love this church and I love the people here. I felt that I fit in well and was very happy leading the choir, giving God all the glory, honor, and praise that He deserves through music. The choir members at Neal are wonderful, loving, supportive, and dedicated people. The relationships I have made will be cherished for the rest of my life. I was always so proud of the music we made. I leave Neal with a heavy heart. God helped me make my decision and is leading me toward another adventure. He placed this opportunity in my path, just like He gave me the opportunity to be a part of Neal UMC. I thank you, love you, and will always include Neal in my prayers.



## Easter Lily Order Form

6" plant is \$8.00

Deadline: Sunday, March 31st

From: \_\_\_\_\_

\_\_\_\_\_

\_\_\_\_\_

In MEMORY of: \_\_\_\_\_

\_\_\_\_\_

\_\_\_\_\_

\_\_\_\_\_

\_\_\_\_\_

In honor of: \_\_\_\_\_

\_\_\_\_\_

\_\_\_\_\_

Please use one form per order. Additional forms available at the church. Please include payment when placing order.

**Deadline is Sunday, March 31st!**



# Happy Birthday

|                                                  |                     |                   |                      |
|--------------------------------------------------|---------------------|-------------------|----------------------|
| 1 Witness/Outreach Committee                     | Psalm 99            | Deut. 9:6-14      | Acts 10:1-8          |
| 2 Last Call Outreach                             | Psalm 99            | Deut. 9:15-24     | Luke 10:21-24        |
| 3 Cub Scouts                                     | Exodus 34:29-35     | 2 Cor. 3:12-4:2   | Luke 9:28-43         |
| 4 Shantac Jones                                  | Psalm 35:11-28      | Exodus 35:1-29    | Acts 10:9-23a        |
| 5 Lay Speakers                                   | Psalm 35:11-28      | Ezekiel 1:1; 2:1  | Acts 10:23b-33       |
| 6 Isabela Ellis                                  | Joel 2:1-2, 12-17   | 2 Cor 5:20b-6:10  | Matthew 6:1-6, 16-21 |
| 7 Worship Committee                              | Psalm 91:1-2, 9-16  | Exodus 5:10-23    | Acts 7:30-34         |
| 8 Kristin Bush, Tammy Geer                       | Psalm 91:1-2, 9-16  | Exodus 6:1-13     | Acts 7:35-42         |
| 9 Military                                       | Psalm 91:1-2, 9-16  | Ecc. 3:1-8        | John 12:27-36        |
| 10 Neal Ave. Christian Women                     | Deut. 26:1-11       | Romans 10:8b-13   | Luke 4:1-13          |
| 11 Dick Hayden, Griffin Jones,<br>Brendon Sessor | Psalm 17            | 1 Chron. 21:1-17  | John 2:1-6           |
| 12 Handbell Choir                                | Psalm 17            | Zech. 3:1-10      | 2 Peter 4-21         |
| 13 Permanent Endowment Committee                 | Psalm 17            | Job 1:1-22        | Luke 21:34-22:6      |
| 14 FREE Community Dinner                         | Psalm 27            | Gen. 13:1-7,14-18 | Phil. 3:2-12         |
| 15 Tracey Wolfle                                 | Psalm 27            | Gen. 14:17-24     | Phil. 3:17-20        |
| 16 Sue Spiker                                    | Psalm 27            | Psalm 118:26-29   | Matthew 23:37-39     |
| 17 Gary Lawrence                                 | Gen. 15:1-12, 17-18 | Phil. 3:17-4:1    | Luke 13:31-35        |
| 18 Laura Atherton, Nicholas Stewart              | Psalm 105:1-42      | Exodus 33:1-6     | Romans 4:1-12        |
| 19 Missions                                      | Psalm 105:1-42      | Num. 14:10b-24    | 1 Cor. 10:1-13       |
| 20 Mildred Evans                                 | Psalm 105:1-42      | 2 Chron. 20:1-22  | Luke 13:22-31        |
| 21 Craig Cairns, Marguerite Wells                | Psalm 63:1-8        | Daniel 3:19-30    | Revelation 2:8-11    |
| 22 AJ Kaplar                                     | Psalm 63:1-8        | Daniel 12:1-4     | Revelation 3:1-6     |
| 23 Evelyn Granger                                | Psalm 63:1-8        | Isaiah 5:1-7      | Luke 6:43-45         |
| 24 Young-At-Heart                                | Isaiah 55:1-9       | 1 Cor. 10:1-13    | Luke 13:1-9          |
| 25 Robert Howe                                   | Psalm 39            | Jer. 11:1-17      | Romans 2:1-11        |
| 26 Hailey Davis                                  | Psalm 39            | Ezekiel 17:1-10   | Romans 2:12-16       |
| 27 Kaitlyn Bush                                  | Psalm 39            | Num. 13:17-27     | Luke 13:18-21        |
| 28 Homeless                                      | Psalm 32            | Joshua 4:1-13     | 2 Cor. 4:16-5:5      |
| 29 Sara Schorger                                 | Psalm 32            | Joshua 4:14-24    | 2 Corinthians 5:6-15 |
| 30 Sue Kreager, Jeff Offenbaker, Ethel Yost      | Psalm 32            | Exodus 32:7-14    | Luke 15:1-10         |
| 31 Patti Rader                                   | Joshua 5:9-12       | 2 Cor. 5:16-21    | Luke 15:1-3, 11b-32  |

## Have a Prayer Request?

Call the church office or Charlene Broseus (366.5609).

Spring Word Search

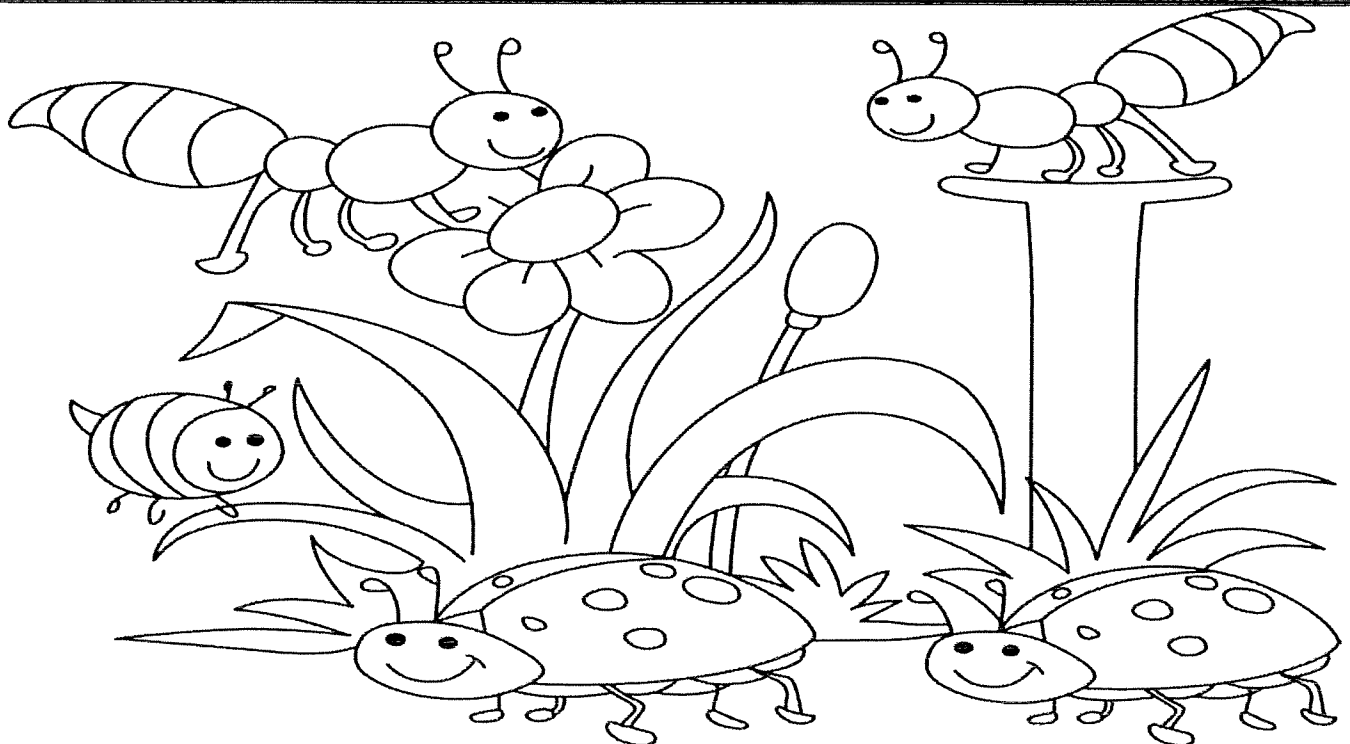
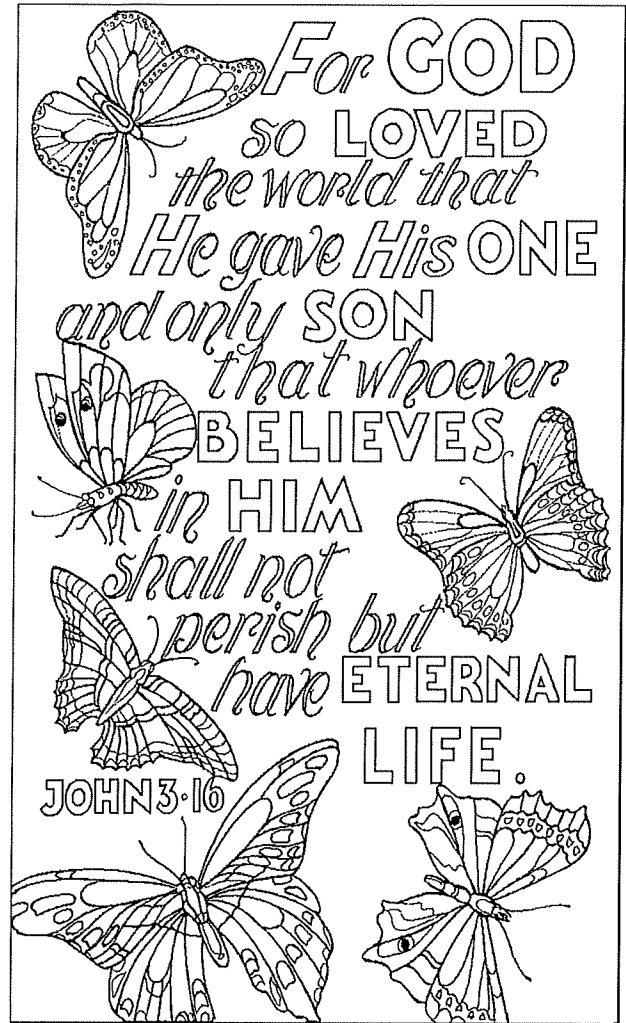
U I T G V C M O O L B B  
 R A I N B O W C H V W U  
 Z X C G V C F G A K Q T  
 R T P R I O J K T C K T  
 C V U O T H G N C I M E  
 S B N W E W A X H H Z R  
 R T U L I P S B X C Z F  
 E T N B G U B Y D A L L  
 W N E S T M L O U I G I  
 O Z V X S E I S I A D E  
 L W E A S T E R E F G S  
 F T Y U D F S A E N V R

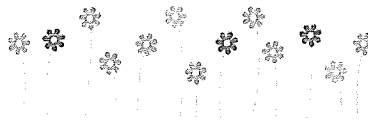
Bloom  
 Butterflies  
 Chick  
 Daisies  
 Easter  
 Flowers

Grow  
 Hatch  
 Ladybug  
 Nest  
 Rainbow  
 Tulips

Free Printable Spring Word Search

designed by Sweet Pattern Days





# March

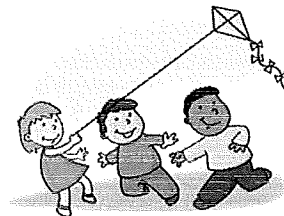
Jesus looked at them and said, 'With man this is impossible, but not with God; all things are possible with God.'

Mark 10:27(NIV)

| Sunday                                                                                                                                                                            | Monday                                                                                               | Tuesday                                                                                                 | Wednesday                                                                                                                          | Thursday                                                                              | Friday    | Saturday                                                                                                                           |
|-----------------------------------------------------------------------------------------------------------------------------------------------------------------------------------|------------------------------------------------------------------------------------------------------|---------------------------------------------------------------------------------------------------------|------------------------------------------------------------------------------------------------------------------------------------|---------------------------------------------------------------------------------------|-----------|------------------------------------------------------------------------------------------------------------------------------------|
| <b>Feb. 24</b><br>Operation Feed Begins!<br><br>6:30 p.m. Youth Group                                                                                                             | <b>Feb. 25</b><br>6:30 p.m. Cub Scouts, FH,101,104,202,302                                           | <b>Feb. 26</b><br>5 pm FREE Community Dinner/God's Closet                                               | <b>Feb. 27</b><br>5:30 p.m. Girl Scouts, FH/102<br>6:00 p.m. Handbell Choir<br>7:00 p.m. Chancel Choir<br>7:00 p.m. BSA Troop 7145 | <b>28</b>                                                                             | <b>1</b>  | <b>2</b><br>6:45 pm N/A, FH                                                                                                        |
| <b>3</b><br>Transfiguration Sunday<br><br>Missions/Food Pantry Sunday<br>Operation Feed<br><br>6:30 p.m. Youth Group                                                              | <b>4</b><br>7 pm Trustees<br><br>6:30 p.m. Cub Scouts, FH,101,104,202,302                            | <b>5</b><br>5:15 pm Chair Aerobics                                                                      | <b>6</b><br><b>Ash Wednesday</b><br><b>7 p.m. Service</b><br><br>5:30 p.m. Girl Scouts,                                            | <b>7</b><br>10 am Lenten Study<br><br>6:30 pm Lenten Study                            | <b>8</b>  | <b>9</b><br>10 a.m.—6 p.m. Cub Scout Blue and Gold Banquet<br><br>**turn clocks ahead one hour before bed**<br><br>6:45 pm N/A, FH |
| <b>10</b><br>1st Sunday in Lent<br><b>Daylight Savings Time Begins</b><br>Operation Feed<br><br>Private Event FH 3 p.m.—6:30 p.m.<br>6:30 Charlie Circle<br>6:30 p.m. Youth Group | <b>11</b><br>12 pm Young At Heart, Park Place Bistro<br><br>6:30 p.m. Cub Scouts, FH,101,104,202,302 | <b>12</b><br>6 pm Finance<br>7 pm Ad Council                                                            | <b>13</b><br><br>5:30 p.m. Girl Scouts, FH/102<br>6:00 p.m. Handbell Choir<br>7:00 p.m. Chancel Choir<br>7:00 p.m. BSA Troop 7145  | <b>14</b><br>10 am Lenten Study<br><br>6:30 pm Lenten Study                           | <b>15</b> | <b>16</b><br>10 am N/A<br>St. Patrick's Day Party, FH                                                                              |
| <b>17</b><br>2nd Sunday in Lent<br><br>6:30 p.m. Youth Group                                                                                                                      | <b>18</b><br><br>6:30 p.m. Cub Scouts, FH,101,104,202,302                                            | <b>19</b><br>April Messenger Deadline<br><br>5:15 pm Chair Aerobics<br>6 pm Nurture Mtg.<br>6 p.m. SPRC | <b>20</b><br><br>5:30 p.m. Girl Scouts, FH/102<br>6:00 p.m. Handbell Choir<br>7:00 p.m. Chancel Choir<br>7:00 p.m. BSA Troop 7145  | <b>21</b><br>10 am Lenten Study<br><br>6 pm NACW Mtg., Lounge<br>6:30 pm Lenten Study | <b>22</b> | <b>23</b><br><br>6:45 pm N/A, FH                                                                                                   |
| <b>24</b><br>3rd Sunday in Lent<br>Operation Feed<br><br>6:30 p.m. Youth Group                                                                                                    | <b>25</b><br><br>6:30 p.m. Cub Scouts, FH,101,104,202,302                                            | <b>26</b><br>5 pm FREE Community Dinner/God's Closet                                                    | <b>27</b><br><br>5:30 p.m. Girl Scouts, FH/102<br>6:00 p.m. Handbell Choir<br>7:00 p.m. Chancel Choir<br>7:00 p.m. BSA Troop 7145  | <b>28</b><br>10 am Lenten Study<br><br>6:30 pm Lenten Study                           | <b>29</b> | <b>30</b><br><br>6:45 pm N/A, FH                                                                                                   |
| <b>31</b><br>4th Sunday in Lent<br>UMCOR Sunday                                                                                                                                   |                                                                                                      |                                                                                                         |                                                                                                                                    |                                                                                       |           |                                                                                                                                    |

## Sundays

- 9:00 a.m. Sunday School
- 10:30 a.m. Worship Service
- 10:00 a.m. Blood Pressure Ministry (first Sunday of the month only)
- 10:00 a.m. Coffee Fellowship
- 6:30 p.m. 3 Nails Youth Ministry





Neal Avenue UM Church  
 BI-MONTHLY TREASURER'S REPORT  
 For the Bi-Monthly Period Ending December 31, 2018

INCOME

|                                        | Current Period | Needed Amount | Year To Date   |
|----------------------------------------|----------------|---------------|----------------|
| Operating Fund Income                  | 38,654         | .....(49,062) | 214,570        |
| Designated Income                      | 4,945          | .             | 12,454         |
| Non-Budget Income                      | 1,492          | .             | 9,554          |
| <b>Total Operating Income</b>          | <b>45,091</b>  | <b>.</b>      | <b>236,578</b> |
| Church Improvement Income              | 0              | .             | 160            |
| Building Fund / Rental Property Income | 3,135          | .             | 25,368         |

DISBURSEMENTS

|                                   | Current Period | Year To Date   | Budget         |
|-----------------------------------|----------------|----------------|----------------|
| NOW-Education                     | 296            | 2,628          | 4,200          |
| NOW-Worship                       | 68             | 1,373          | 2,000          |
| NOW - Outreach                    | 0              | 790            | 250            |
| NOW-Witness                       | 62             | 370            | 300            |
| Pastors / Lay Personnel Salaries  | 22,685         | 141,095        | 155,730        |
| Church Utilities                  | 3,406          | 19,133         | 18,500         |
| Parsonage Utilities               | 520            | 3,263          | 2,900          |
| Taxes & Assessments               | 0              | 1,796          | 1,800          |
| Insurance Expense                 | 0              | 10,518         | 11,000         |
| Building and Equipment Mainten    | 1,379          | 10,037         | 12,500         |
| Office Expense & Postage          | 938            | 4,332          | 5,000          |
| Sr Minister Acct. Reimbmt. Exp    | 2,376          | 3,873          | 4,000          |
| Hospitalization                   | 0              | 0              | 9,000          |
| Pension Expense                   | 1,569          | 9,412          | 10,000         |
| Youth Director Travel Reimb.      | 0              | 0              | 300            |
| Church Transportation Expenses    | 152            | 3,941          | 2,000          |
| Lay Leader Conference Allowanc    | 0              | 0              | 500            |
| Conference Apportionments         | 0              | 4,534          | 34,694         |
| Conference Benevolences           | 0              | 1,748          | 0              |
| District Apport & Benevolences    | 858            | 8,823          | 5,254          |
| Miscellaneous Expense             | 113            | 238            | 40             |
| Rental Property Expense           | 1,702          | 18,447         | 0              |
| Non-Budget                        | 2,093          | 12,929         | 1,200          |
| <b>Total Disbursements</b>        | <b>38,901</b>  | <b>262,324</b> | <b>283,468</b> |
| Church Improvement Expenses       | 35,622         | 152,045        | 0              |
| Debt Reduction Interest Expenses  | 0              | 0              | 0              |
| Debt Reduction Principal Expenses | 0              | 0              | 0              |

Molly L Smith, Treasurer

Neal Avenue United Methodist Church  
12 Neal Avenue  
Newark, OH 43055

Return Service Requested

Non-Profit  
Organization  
US Postage Paid  
Newark, OH 43055  
Permit No. 88

*March 2019*



**Lent**

The Neal Avenue Messenger is published once a month (with the exception of July/August being combined) for the enjoyment of friends and members of Neal Avenue Church.

**\*April Messenger deadline is March 20**

**Please report any address changes to the office immediately.**

**Pastor's Office Hours:** Monday-Thursday: 9 a.m. - Noon

**Church Office Hours:** Monday - Thursday 9:00 a.m.– Noon and 12:45 p.m. - 3:00 p.m.; Friday 9 a.m. - Noon  
(740) 344-3021 or (740) 344-3308

Email: [office@nealavenue.com](mailto:office@nealavenue.com)

Web: [www.nealavenue.com](http://www.nealavenue.com)

**Staff:**

Rev. Eva Marie Wolfe, Senior Pastor

Rev. John Harra, Pastor Emeritus

Randy Spiker, CLM

Doug Stout, Dir. Of Youth Ministries

Susan Spiker, Accompanist

Rodney Harris, Music Director

Mary Ellen Strahm, Organist

Laura Atherton, Bell Choir Director

Elward Smith, Custodian

Patti Rader, Office Manager